

NAMIBIA
WITH
WILD INSIGHTS
6 – 22 SEPTEMBER 2025



THE ULTIMATE TRAVEL COMPANY
ESCORTED TOURS



Wild Insights
Namibia



INCORPORATING
**BRIDGE &
WICKERS**

NAMIBIA – LAND OF CONTRASTS

6 – 22 SEPTEMBER 2025

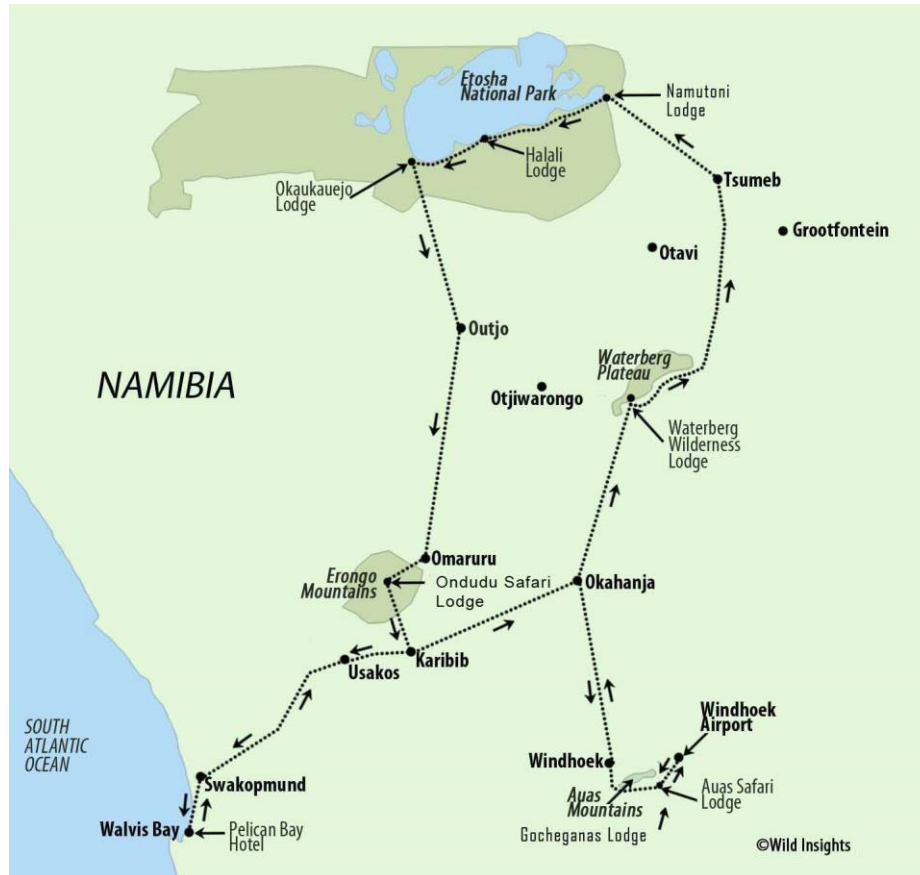


LEADERS: KEITH AND LINDA OFFORD

Keith and Linda Offord are both zoology graduates, very experienced field ornithologists and have run countless wildlife watching holidays around the world. Together, they set up Wild Insights in 2004 and have operated a consistently sold-out UK and overseas programme with over 95% repeat bookings – a reflection of their consistent professionalism, care and attention.

CONTACT	Louisa Thompson – Escorted Tours Consultant
DIRECT LINE	020 7386 4682
TELEPHONE	020 7386 4620
EMAIL	louisa@theultimatetravelcompany.co.uk

DETAILED ITINERARY



The ever-popular Namibia once again lures us back for another chance to savour Africa at its best. Our tour starts and finishes at Windhoek but explores some of the finest destinations en route. Vast landscapes of thornveld are punctuated by mountain ranges such as Waterberg and Erongo, both hosting many of Namibia's endemic species including White-tailed Shrike, Monteiro's Hornbill, Rock runner and Carp's Tit. Wildlife is everywhere and no more so perhaps than in the vast Etosha National Park where 22,000 square km of wilderness is home to a wide range of birds and mammals. Waterholes attract both, including one of Africa's most endangered mammals – the Black Rhino. Our tour to this land of contrasts also includes the spectacle of thousands of waterbirds at the internationally important lagoon at Walvis Bay.



Wild Insights
Namibia



INCORPORATING
BRIDGE &
WICKERS

DAY 1: SATURDAY, 6 SEPTEMBER

LONDON / FRANKFURT / WINDHOEK

Depart London Heathrow for an overnight flight via Frankfurt, arriving in Windhoek the following morning.

DAY 2 – 3: SUNDAY, 7 – MONDAY, 8 SEPTEMBER

WINDHOEK / AUAS MOUNTAINS

Following our flight from London Heathrow via Frankfurt, we arrive in Windhoek early in the morning, where we are met and greeted by our local driver/guide. Transfer by comfortable 24-seater bus to Auas Safari Lodge, approximately 45 mins from the airport. En route, we should see the first Fork-tailed Drongos and Lilac-breasted Rollers. The rest of the day, for those with remaining energy, we will explore some trails around this excellent lodge or alternatively you may wish to simply relax in the tranquil gardens. Expect your first views of Groundscraper Thrush, Crimson-breasted Shrike, Familiar Chat, Scaly-feathered Finch and Black-faced Waxbill amongst the fantastic array of passerines. The grounds are patrolled by raptors including Gabar Goshawk and Pale Chanting Goshawk. This is such a good site that we have planned a whole day of gentle strolls plus a game drive enabling the extensive grounds to be explored to the full. Two reservoirs are magnets for a range of water birds including cormorants, African Darter, Three-banded Plover, Wood Sandpiper and Hamerkop. Many typical thornveld species are found here such as Lilac-breasted Roller, Marico Flycatcher, Pearl Spotted Owl, Short-toed Rock Thrush, Red-eyed Bulbul and Mountain Chat with the additional likelihood of the endemic Monteiro's Hornbill. An impressive array of mammals includes Steenbok, Greater Kudu, Waterbuck and, with luck, Bat-eared Fox and Meercat.

Overnight: Auas Safari Lodge.

DAY 4 – 5: TUESDAY, 9 – WEDNESDAY, 10 SEPTEMBER

AUAS / WATERBERG

Our journey will take us north today along excellent roads to the Waterberg Plateau where we will spend two nights. Our beautiful lodge nestles into the plateau itself and provides an unexpected break from the dry thornveld, a perennial fountain giving rise to larger woodlands. Both Red-billed and Hartlaub's Francolin can be seen here plus Purple Roller, Bearded Woodpecker, Grey-backed Camaroptera, Little Sparrowhawk, Ruppell's Parrot, Violet Wood-hoopoe and African Scops Owl. Higher on the escarpment we will be looking for Bradfield's Swift, Carp's Tit and African Hawk Eagle. The following day we will have another chance to fully explore the beautiful grounds of the lodge including a nearby lake and drinking pool for Bateleur, Black-shouldered Kite and Secretary Bird plus a myriad of passerines such as Black-faced and Violet-eared Waxbills, Golden-breasted Bunting and Green-winged Pytilia.

Overnight: Waterberg Wilderness Lodge.



African Hawk-eagle



Lilac-breasted Roller



Wild Insights
Namibia



INCORPORATING
BRIDGE &
WICKERS

DAY 6: THURSDAY, 11TH SEPTEMBER

WATERBERG / ETOSHA

After an early morning walk around the grounds of the lodge we will head for Etosha National Park. If time allows, we will stop off at Lake Otjikoto en route which can be good for some of the heron species plus sunbirds and whydahs. We will be staying for one night at Namutoni, just a few miles into the reserve from the Von Lindquist Gate in the east. The rest camp is set around an old German fort and includes a thatched seating area where the nocturnal antics around a floodlit waterhole can be enjoyed. Red-necked Falcon and gangs of Banded Mongoose regularly patrol the grounds which are typically very bird-rich.

Overnight: Namutoni

DAYS 7 – 8: FRIDAY, 12TH – SATURDAY, 13TH SEPTEMBER

ETOSHA / NAMUTONI TO HALALI

Our journey today takes us midway across the reserve via various waterholes to the restcamp at Halali. Predator enthusiasts should be in for a treat here with the possibility of Lion and Leopard as well as raptors galore such as Lanner, Red-necked Falcon and Gabar Goshawk hunting the thousands of Red-billed Quelea swirling around. On top of this there are mammals everywhere from Springbok to Elephant as well as very good chances of Black Rhino. On the open plains we will scan for Double-banded Courser, Kori Bustard, Secretary Bird, and the very scarce Cheetah. Birdwatching is also excellent in the grounds of Halali with Bare-cheeked Babbler, Golden-breasted Bunting, Groundscraper Thrush, Carp's Tit, and a number of roosting owl species including African Scops, Southern White-faced Scops and Barn. The waterhole at the restcamp is one of the best, regularly attracting Black Rhino, Spotted Hyena and Leopard.

Overnight: Halali



Crimson-breasted Shrike



Black Rhino



Wild Insights
Namibia



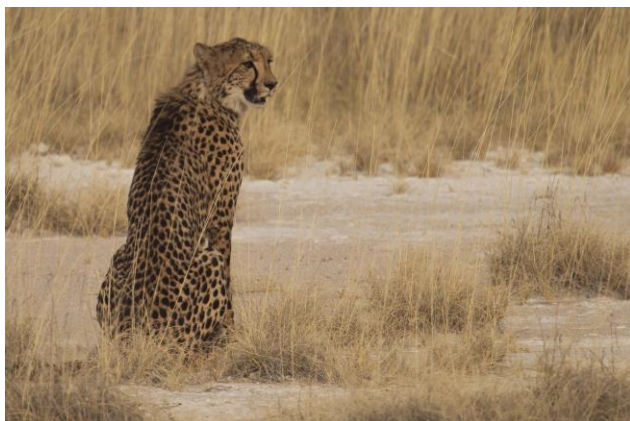
INCORPORATING
BRIDGE &
WICKERS

DAYS 9 – 10: SUNDAY, 14TH – MONDAY, 15TH SEPTEMBER

ETOSHA / HALALI / OKAUKUEJO

We then head on to Okaukuejo, our final stop in Etosha and en route we will explore some of the best areas for the big cats including Lion and Cheetah, as well as checking the various lark species which are seen along the road. Okaukuejo is another excellent lodge with probably the best waterhole in the park, a magnet for birds and mammals alike. One of the great spectacles is an elephant herd heading at a serious pace from the horizon to the water. At dusk hundreds of Double-banded Sandgrouse come to drink, sometimes overlooked by an enormous Verreaux's Eagle Owl and this has also been a favourite site for Black Rhino which have been seen gathering in numbers up to 8 at a time. Birdwatching in the grounds is also very fruitful with readily viewable Sociable Weavers (plus attendant Pygmy Falcons), African Hoopoe, Common Scimitarbill, Chestnut-vented Tit-babbler, and Kalahari Scrub-robin to name a few.

Overnight: Okaukuejo



Cheetah



Namaqua Chameleon

DAY 11 – 12: TUESDAY, 16TH – WEDNESDAY, 17TH SEPTEMBER

ETOSHA / ERONGO

After an early game drive, we will depart Etosha and head south-west to the Erongo Mountains, a stronghold for a number of key Namibian Species including Rockrunner, White-tailed Shrike, Monteiro's Hornbill, Hartlaub's Francolin and Carp's Tit, all of which can be seen around our stunning lodge with chalets nestled amongst the rugged granite koppies. Klipspringers pirouette on the rocks while Dassies (Rock Hyrax) take cover from both Verreaux's and African Hawk Eagles which regularly patrol the edges. During our stay here we will leave the vehicle for a whole day giving us a chance to wander the tracks, relax and witness the sun disappearing from the big African sky revealing crystal clear stars as Freckled Nightjars hawk for moths around the buildings.

Overnight: Ondudu Safari Lodge.



Wild Insights
Namibia



INCORPORATING
BRIDGE &
WICKERS

DAY 13 – 14: THURSDAY, 18TH – FRIDAY, 19TH SEPTEMBER

ERONGO / WALVIS BAY

Today our visit to this land of contrasts will take us, appropriately, to the coast. The journey then takes us through increasingly arid country bordering the desert, where Karoo Chat, Ruppell's Khorhaan, Temminck's and Double-banded Courser and Stark's Lark can be spotted. We finish the day in an entirely different setting, in the company of the massed gatherings of Greater and Lesser Flamingo along with Eastern White Pelican at Walvis Bay. The following day will give us the chance to really explore the fabulous wetland sites in this locality for a wide range of waders (some in summer livery) and endemics such as the diminutive Damara Tern, plus, in total contrast, a visit to the nearby dunes. Overnights at the perfectly situated and very comfortable Pelican Bay Hotel, on the edge of the lagoon.

Overnight Pelican Bay Hotel

DAY 15: SATURDAY, 20TH SEPTEMBER

WALVIS BAY / AUAS

Our last full day takes us full circle, back across the gravel plains and thornveld to the Auas mountains again for a welcome overnight stop. Situated a mere 29 kilometres South East from Windhoek on a hilltop overlooking a spectacular landscape, Gocheganas is a luxury lodge offering top quality accommodation and set in 6000 hectares of wilderness. As well as a delightful and relaxed final stay, this will give us a final chance to see, once again, some of the typical birds of the central region including Mountain Wheatear, Short-toed Rock Thrush, Orange River Francolin and Martial Eagle to name a few, plus of course a variety of mammals and other fauna.

Overnight: Gocheganas Lodge

DAY 16: SUNDAY, 21ST SEPTEMBER

AUAS / WINDHOEK

Our early evening flight and a late check-out from Gocheganas will give us time to enjoy a relaxed morning and some last wildlife watching before lunch and our return flight to the UK via Frankfurt.

DAY 17: MONDAY, 22ND SEPTEMBER

FRANKFURT / LONDON HEATHROW

Connect in Frankfurt for our flight to London Heathrow arriving early in the morning.

TOUR PRICE

COST: £6,950 PER PERSON

Single Supplement: £370 per person

Please note that the minimum number group size for the tour is 8 and the maximum is 13.

PRICE INCLUDES

- economy class scheduled flights
- air passenger duty, passenger service charge, airline security charges, airport taxes and fuel surcharges where applicable - currently £100 (liable to change without notice)
- accommodation throughout as shown in the itinerary
- all meals
- all entrance fees, visits, excursions and transportation as per the itinerary
- gratuities in restaurants for included meals; gratuities to guide/s gratuities to driver/s; portorage
- the services of your tour leader throughout

PRICE EXCLUDES

- travel insurance
- items of personal expenditure (e.g. telephone calls / laundry etc.)
- government levies or taxes introduced after costing and publication of this programme on 07/08/24
- Visa entry cost.

AIRLINE TICKETS

As a tour operator we have access to special airfares. While this offer good value, they do carry certain restrictions applied by the airline. Please ask us for details.

Note: If you are thinking about using air miles to upgrade to a premium cabin on the flights, please check with us first as fare restrictions might not permit this.

AIRLINE SEATING

The rules governing the pre-booking of seats vary from airline to airline. Some allow us to pre-book seats immediately and without charge, some only once the tickets are issued but with charge, and others only when you check in either online or at the airport.

We will clarify the rules for your specific carrier(s) with our confirmation documents. In the event that seating cannot be arranged until tickets are issued (normally six weeks prior to departure) and you prefer not to wait, we can issue your tickets earlier provided you are happy to pay in advance for the flight costs in addition to the required deposit for the holiday. However, please be mindful that the majority of our discounted fare tickets, once issued, are non-refundable and will attract fees should you wish to make any date changes. Nor will you be allowed to change the actual flight routing.



Wild Insights
Namibia



INCORPORATING
BRIDGE &
WICKERS

BOOK WITH CONFIDENCE

You will probably be aware of the difficulties many travellers faced with obtaining refunds when their holidays were disrupted or cancelled as a result of such events as ash cloud and political unrest and, more recently, the Coronavirus pandemic. By booking your travel arrangements with us, not only are you guaranteed the peace of mind that comes with full financial protection but also all the round the clock assistance we are able to provide, should the need arise.

Should there be restrictions in place during the immediate lead up to the trip that prevent you from travelling, we will either postpone it or offer you an alternative. If neither of these two options are acceptable, we will offer you the choice of a Refund Credit Note, redeemable on a specified date and fully protected by our ABTA bond, or a cash refund of all monies paid.

CHANGES TO THE ITINERARY

Please note, that certain elements of this itinerary, and/or the order of events, may well be subject to alteration due to circumstances beyond our control.

FITNESS TO TRAVEL

The pace will be relaxed throughout. There will however be walks, generally no longer than 4 Km, at a gentle pace, mostly on level gradients but occasionally over uneven ground. Opportunities will be taken routinely to stop. A reasonable level of mobility is required throughout. Whilst we do not impose any age limitations on joining a tour, participants must be reasonably fit. The very nature of the activities involved in our tours (and the difficulties of direct access by vehicle in various places) means that a certain amount of walking and standing is unavoidable on almost all tours. We regret that our tours are not suitable for people who have significant difficulty in walking, may require wheelchair assistance at any time, or are unable to keep pace with the group. If you are in any doubt as to the suitability of a tour, please make this known to us before you book, and we will advise you accordingly. The Ultimate Travel Company reserves the right to decline a reservation without necessarily giving a reason.

HEALTH REQUIREMENTS

As we are not medical experts, we advise that you contact your doctor or local health authority for up-to-date medical advice.

We would advise that all your routine vaccinations are up-to date prior to travel. No special precautions are required for travel to Namibia and no inoculations are compulsory, although a Yellow Fever certificate is required if you have travelled within an infected area recently. A number of inoculations are 'recommended' in certain circumstances – hepatitis A and B, polio, tetanus, typhoid, diphtheria & TB and Japanese B encephalitis. We will also provide the latest advice regarding malaria (which is generally low risk at the time of year we are travelling) as we get closer to the tour.

PASSPORT AND VISA INFORMATION

The Namibian Government has recently announced that a new visa requirement will be introduced in April 2025. We have been advised that visitors will be able to buy their 90-day visa, costing US\$90, on arrival in Namibia. We will keep you fully informed of the procedure. Please ensure that your passport is valid for at least six months from the date of entry.



Wild Insights
Namibia



INCORPORATING
BRIDGE &
WICKERS

FCO ADVICE

We recommend that you periodically review the travel advice issued by the Foreign & Commonwealth Office, which relates to all aspects of your destination, at www.gov.uk/knowbeforeyougo.

OTHER

Please ensure that your travel insurance is in order. It is important that you take details of your travel insurance with you since this will contain important contacting information in the case of an emergency.

WHY CHOOSE US?

The Ultimate Travel Company has been organising bespoke, tailor-made holidays and escorted group tours around the world since the early 1990s. The opportunity that we identified then was for a travel company with the knowledge and enthusiasm of a smaller specialist, but with the range and buying power of a much larger organisation, and we like to think that we have maintained this balance over the years. More importantly, we try to be an easy and friendly company to deal with, and because most of us have had the good fortune to work abroad, we are able to approach travel in a sensitive and intelligent way.

QUALITY OF SERVICE

We like to think that our success has been built on a simple formula - to deliver a high standard of service before, during and after each holiday, a duty of care and commitment to you, and value for money. We aim to be totally flexible in our approach, as this allows us to create the holiday that you want and one that is easy and enjoyable to plan.

However, if you feel that there are areas in which we could improve our service to you, please do not hesitate to contact either our Managing Director Nick Van Gruisen, or Executive Director Rowan Paterson, on 020 7386 4646. You can also email them:

nick@theultimatetravelcompany.co.uk
rowan@theultimatetravelcompany.co.uk

WHAT WE OFFER

First-hand knowledge and personal service is at the core of what we offer. Our consultants travel to all the destinations that we feature on a very regular basis, so that the advice you receive is accurate and up to date. They will also look after you from the outset and assume full responsibility for ensuring that your travel plans are designed and delivered as requested. Planning a holiday should be an enjoyable and effortless experience, and we will do all that we can to ensure that this is the case.

OUR REPUTATION

We have grown largely through personal recommendation and repeat business, and so we treat our reputation with care. The directors and owners of the company, led by Nick Van Gruisen, are very much 'hands on' so immediate decisions can be taken to ensure the standard of service that our clients have come to expect is maintained.



Wild Insights
Namibia



INCORPORATING
BRIDGE &
WICKERS

LOCAL REPRESENTATION

Equally crucial is the quality of our local associates and suppliers. It is they who look after you on holiday and it is their guides, vehicles and general support service that will determine your enjoyment of it. We therefore take great care to ensure that our ground handlers have the requisite expertise, efficiency and creativity, and also the ability to deal sensitively and swiftly with any situation that might arise. The fact that we have worked together for many years and know each other well is a further bonus.

RESPONSIBLE TRAVEL

As a company with a passion for travel, we understand the vital support that tourism can provide to communities and fragile habitats throughout the world. At the same time, we are aware that tourism can have a negative impact and are committed to doing what we can to minimise this risk.

In 2007, an independent body completed an Environmental Audit on all aspects of The Ultimate Travel Company. This covered not only our own practices but those of our worldwide suppliers, thereby ensuring that we all met the necessary environmental and employment criteria.

The audit also measured the carbon footprint produced by our London office and by our international travel, and we now offset this with an annual donation to Social Change and Development, a small but dynamic tree planting initiative in India.

Further initiatives include a 'charity donation' scheme, whereby we ask clients for a voluntary contribution of £10 which we then match. As a result of this initiative, a handful of small overseas charities, and the healthcare, environmental and educational projects that they run, now share an annual donation of more than \$100,000.

If you want further details of these initiatives, please ring Nick Van Gruisen on 020 7386 4646.

EXTRA VALUE

It can be difficult at times to recognise the extra value promised by travel companies. Generally speaking, we all offer the same flight, the same hotel, the same excursion, the same sunset, and at similar prices.... indeed, in many ways, the same holiday experience!

Here, at The Ultimate Travel Company, we strive to go further. While we believe that the diversity of destination, intimate product knowledge and personal service we offer already sets us apart, we supply all our clients with detailed information on all aspects of their forthcoming journey, a 10% discount voucher at Daunt Books (described by The Daily Telegraph as 'the most beautiful bookshop in London – designed for travellers who like reading') and a welcome home 'surprise'.

Honeymooners can also look forward to a wedding gift on arrival at their chosen destination.

Moreover, we continually monitor your movements while you are away so that we can offer any assistance that might be required, effectively and without delay. And if genuine problems do arise as a result of any error on our part (few as these may be!), we will not shy away from our own responsibilities and our commitment to you.



ADDRESS: Yew Tree Farm, Selattyn, Oswestry, Shropshire SY10 7NP

TELEPHONE: 01691 718740

EMAIL: keith@keithofford.co.uk

WEBSITE: www.wildinsights.co.uk



Wild Insights overseas tours are part of a wider programme of Ultimate Travel Company holidays worldwide, and their terms and conditions apply. The Ultimate Travel Company is fully licensed and bonded with ABTA and IATA and all their overseas tours are fully protected by their Civil Aviation Authority ATOL L